

A dramatic, high-contrast image of a massive explosion. The center is a bright, glowing yellow and white fireball, surrounded by a thick, billowing cloud of orange and red smoke. Numerous bright, golden sparks and debris are being propelled outwards in all directions, creating a starburst effect against the dark background. The overall scene conveys a sense of intense power and destruction.

SHURESTAR

BLAST DOORS

***CUSTOM, SPECIALTY AND HYBRID PRODUCTS FOR
BUILDING SECURITY AND PHYSICAL PROTECTION***

FROM CONCEPT TO FABRICATION

WE DO THE PROJECTS THAT OTHERS WON'T!

- Blast Resistant up to 15,000 PSI
- Custom Built and Specifically Designed for the Application
- Personnel, Production, Vehicle, and Custom Door Applications
- Fragmentation Designs Including Glazing
- P.E. Calculations to UFC-3-340-02
- Fire Rated Construction up to 3 hrs
- Electric, Hydraulic or Pneumatic latches and Full Power Operators
- Acoustical Construction with Sound Seals Available
- Swinging Doors Ship in Frames With All Hardware Installed Where Applicable
- Air and Gas Tight –ASTM E283
- Leakage Tested—E330 Structural

Sliding Doors



Fire Rated Sliding Pressure/Air Tight Hybrid Battery Production Facility



344 PSI Sliding Blast Door - Fragmentation Pneumatically Sealed- 15PSI Gas Tight Under Full Load Assumed to Act Simultaneously With the Shock Load.



Blast and Fire Rated Sliding Door with Explosion Proof Operator for Chemical Storage



Curved Pressure Resistant Door
STC 50 Acoustical rating

Swinging Doors



**50 PSI 3 hr Fire Rated Blast Door
Custom Panic Hardware Chemical**



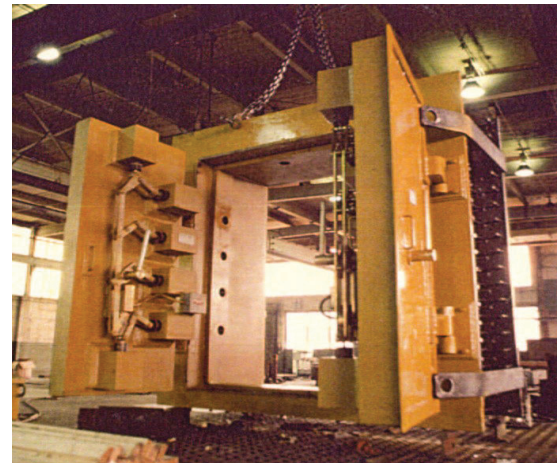
**80 PSI Power Operated
100% Rebound**



**270 PSI Blast Door With Air
Tight Seals and Sight Hole**



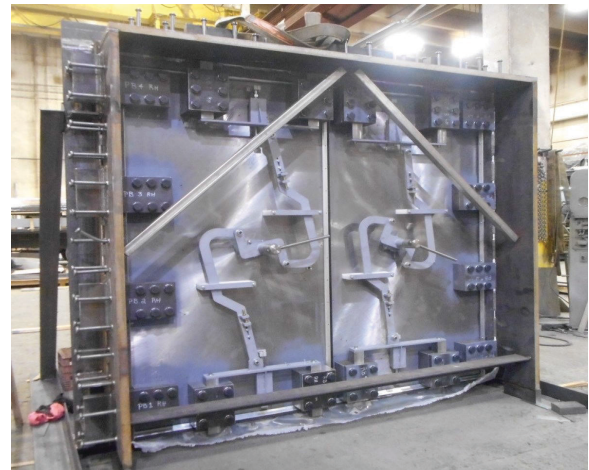
**STC 60 Blast and Fragment Resistant Engine
Test Cells Power Operators and Latches**



**500 PSI 5" Thick Solid Steel Blast Door
Gas Tight Chemical Resistant Seals**



**High Pressure/Vacuum Space Test Facility
Dual Pneumatic Seals and Hydraulic Operation**



**560 PSI with 631 PSI Blast Overpressure
Fully Operable Post Blast Occurrence**

PHONE 248.365.4382

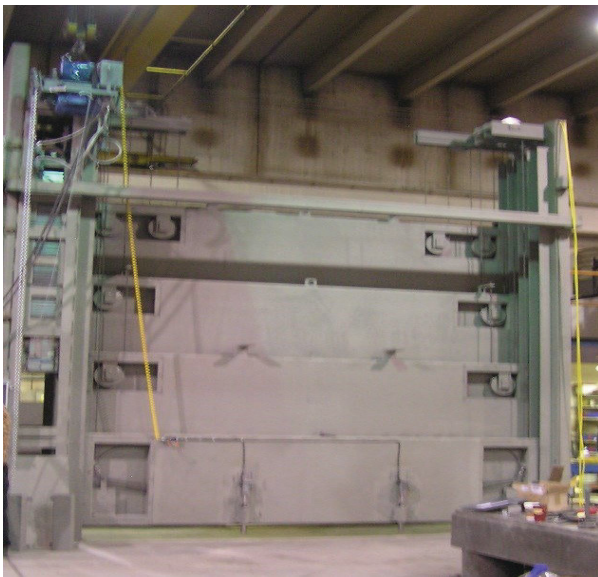
Vertical Lifting Doors



1 PSI Three Panel Vertical Lifting Fueling Door for Metro Transit System Garage



15 PSI Three Panel Vertical Lifting Blast Resistance—50 Caliber Bullet Resistance—and Impact Resistant to K-4 –15,000 lb. Vehicle at 30 mph



400 PSI Four Panel Vertical Lifting 400 Blast Door with Extremely Low Head Room



30 Ton Concrete Vertical Lifting Hydraulically Operated Door

Distributed by:

SHURESTAR

2498 Commercial Drive,
Auburn Hills MI, USA 48326
Main: 248.365.4382
Fax: 248.365.4383
Email: sales@shurestar.com
Web: www.shurestar.com